

*The
Conference
Center
at*
 **Stoweflake**



1746 Mountain Road, P.O. Box 369, Stowe, VT 05672 USA

800-253-2232 • 802-253-7355 • Fax 802-253-6858

UK Freephone 0500-892-522

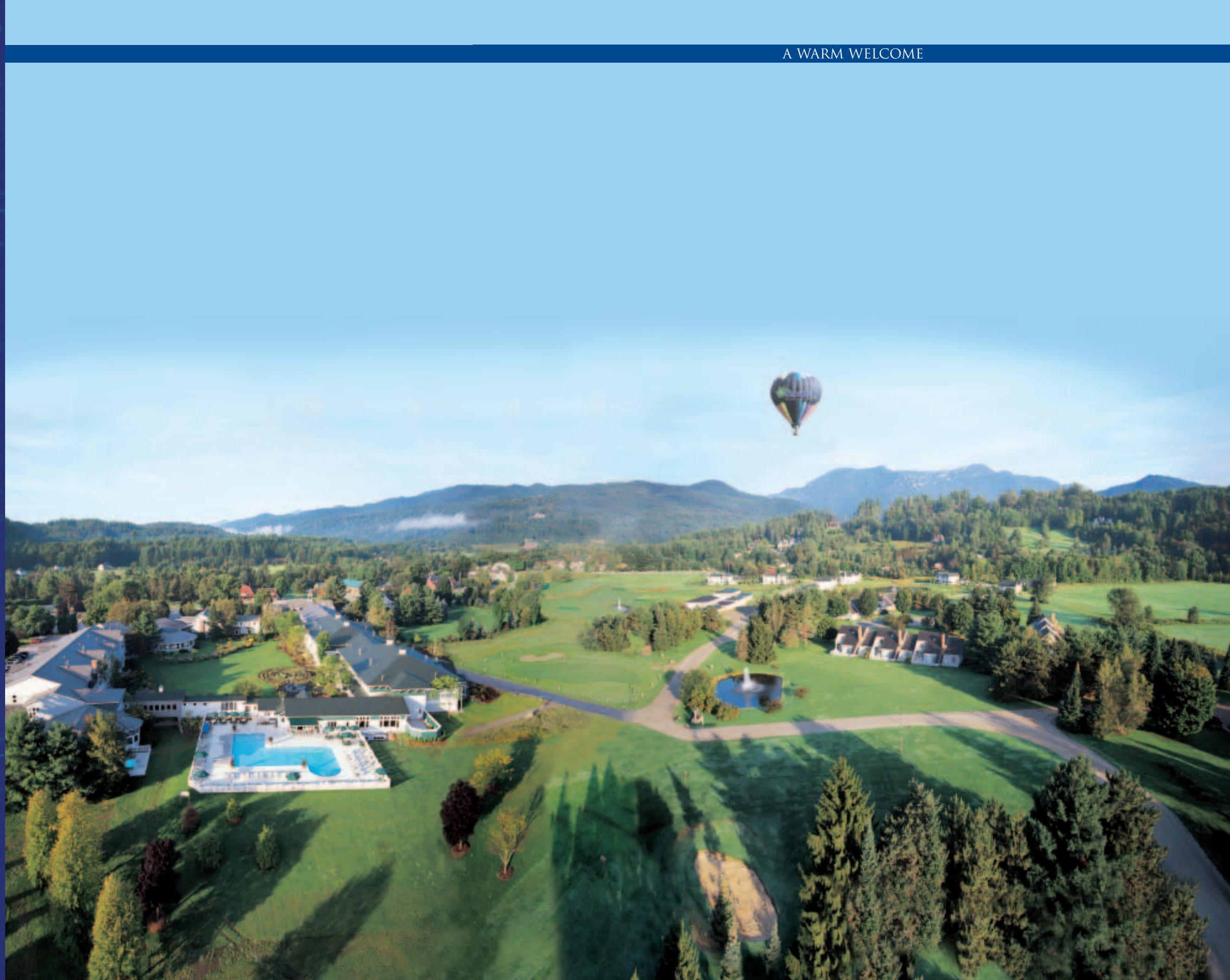


info@stoweflake.com

www.stoweflake.com



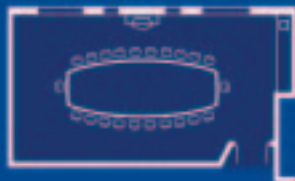
For over 40 years, the Stoweflake has celebrated the tradition of New England hospitality, welcoming groups from around the world looking for outstanding service and impeccable amenities. The four-season, world-class resort is home to Vermont's only conference center certified by the International Association of Conference Centers (IACC). A member of the World Hotels Deluxe Collection, and Stowe's AAA-Four Diamond resort, the Stoweflake offers the best of both worlds - luxurious accommodations and state-of-the-art conference facilities - in one of the most beautiful locations in America, scenic Stowe, Vermont.



The award-winning Conference Center at StoweLake offers 15 exceptional meeting spaces to accommodate groups of varying sizes. The 22,000 square foot conference center, one of the largest in Vermont, includes breakout rooms, a sun filled atrium, a 4,500 square foot elegant ballroom and a private, executive boardroom. Ergonomic chairs, rheostat-controlled lighting, individual climate controls and continuous refreshments enhance the meeting experience. The property features wireless and hard-wire technology, in all meeting spaces, guest rooms, and common areas. All function rooms are equipped with the most up-to-date media support systems and technologically advanced equipment available to assure smooth, professional presentations every time. In-house experts are always on hand to provide technical support.



For smaller meetings, or for use as break-out rooms, the Beatrice, Mansfield, Stuart and the West Branch are ideal. Regardless of size, all groups receive the same gracious hospitality and attentive, professional service.



EXECUTIVE BOARD ROOM

	Dimensions	Sq. Feet	Ceiling Height	Theater	Classroom	U-Shape	Hollow Square	Banquet
BEATRICE	36 X 27	972	12' 6"	60	40	25	35	70
EXECUTIVE BOARD ROOM	23 X 43	1000	8' 6"		UP TO 22 FOR BOARD ROOM SETUP			

MEETINGS ON A GRAND SCALE



The showpiece of the conference center is the 4,500 square foot Pinnacle Room. This magnificent ballroom can comfortably accommodate 495 participants theater-style or 400 in banquet configuration. With its 13-foot ceilings and elegant fixtures, the Pinnacle Room provides an impressive ambiance for corporate functions, sumptuous banquets, award ceremonies and boardroom presentations. This flexible space easily segments into three salon-style spaces for conferences, corporate meetings, association programs, seminars, business retreats and special occasions. Expansive windows flood the space with natural light and provide garden views.

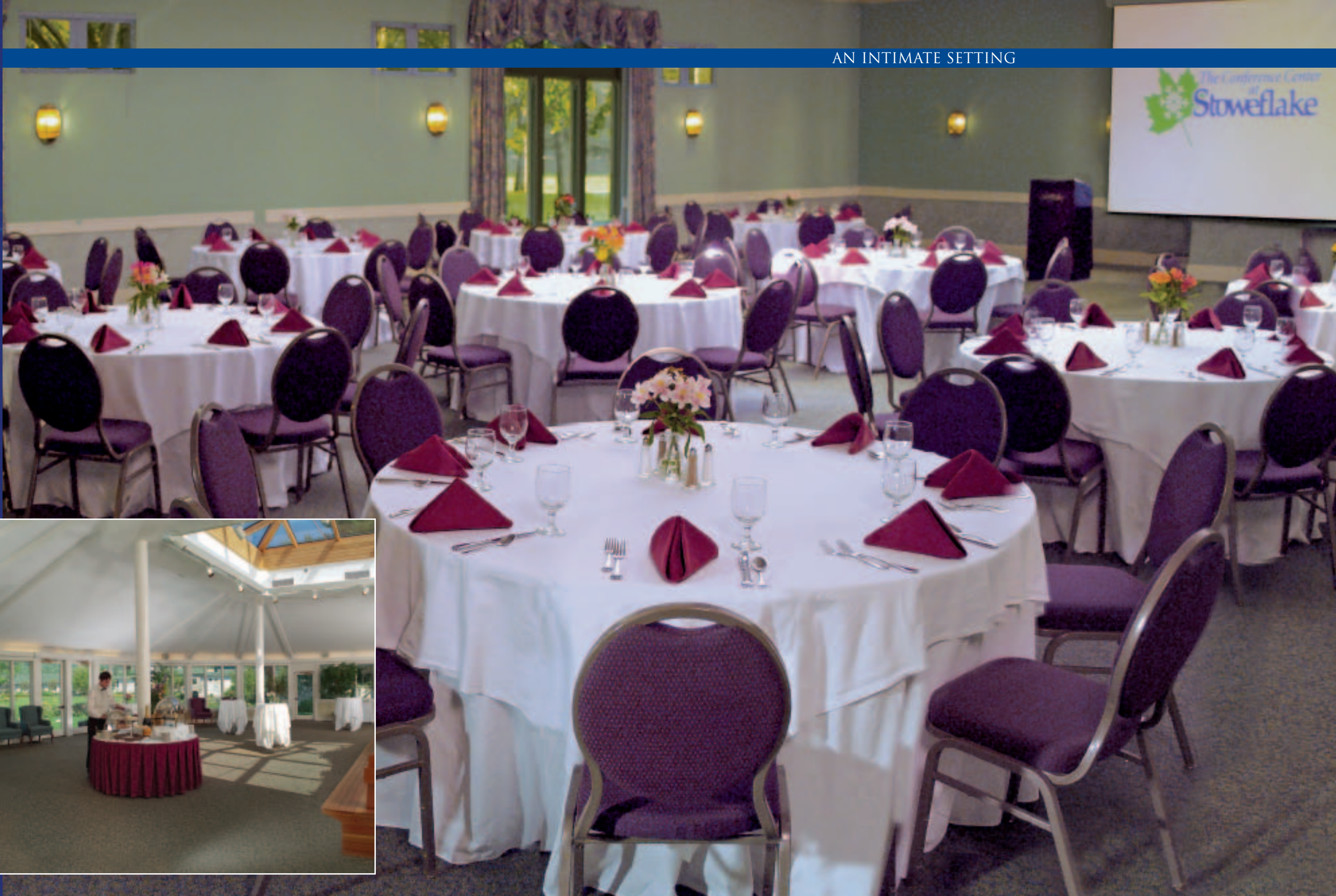


	Dimensions	Sq. Feet	Ceiling Height	Theater	Classroom	U-Shape	Hollow Square	Banquet
PINNACLE	48 X 93	4464	12' 6"	400	250	110	125	375
PINNACLE A	48 X 31	1488	12' 6"	130	80	40	45	110
PINNACLE B	48 X 31	1488	12' 6"	130	80	40	45	120
PINNACLE C	48 X 31	1488	12' 6"	130	80	40	45	120



Whatever the meeting objective, the Conference Center at Stoweflake's goal is to make the experience as enjoyable, productive and comfortable as possible. For innovative solutions and productive, successful meetings, the cutting-edge Conference Center at Stoweflake provides exceptional facilities and service. With its efficient staff, state-of-the-art conference technology, flawless catering and highly personalized service, it comes as no surprise the Stoweflake Conference Center has been the recipient of the Pinnacle Award for Excellence since 1996. The success of any professional meeting hinges on an inviting, comfortable environment and attention to details, hallmarks of the Conference Center at Stoweflake.

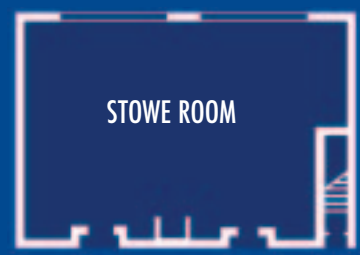
AN INTIMATE SETTING



Successful Meetings: Pinnacle Winner Since 1999
 Meeting News: Planners Choice Award
 Meetings & Conventions Gold Key Award



The sun-drenched Atrium comfortably accommodates mid-size groups, ideal for receptions, intimate banquets or break-out groups.



	Dimensions	Sq. Feet	Ceiling Height	Theater	Classroom	U-Shape	Hollow Square	Banquet
STOWE	60 X 43	2580	12'	250	150	65	80	220
ATRIUM	37 X 50	1880	CATHEDRAL	150	75	40	50	100

THE SPLENDOR OF A STOWEFLAKE RECEPTION

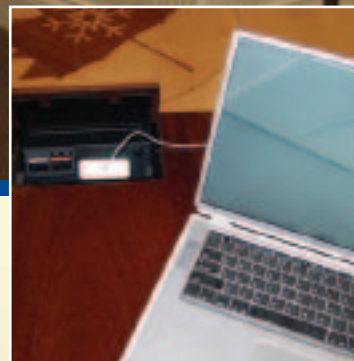


When it comes to entertaining, the Conference Center at StoweFlake seamlessly blends business with pleasure and excels at planning and catering receptions, banquets and cocktail parties. The talent and expertise of the culinary staff, which oversees conference events, plays a crucial part in distinguishing StoweFlake as the only resort in Stowe to receive the coveted AAA Four-Diamond Award of excellence. With its dedicated conference kitchens, professional wait staff and spectacular venues in which to entertain, any social gathering at the StoweFlake is a memorable event. Whether it is an intimate, outdoor affair surrounded by the StoweFlake's glorious gardens, or a banquet in the spectacular ballrooms, the StoweFlake guarantees

gracious
ambiance,
imaginative
menus and a
specially trained
professional
wait staff ready
to anticipate
every need.

The Conference Center assigns an Event Planner to every special occasion to oversee the logistics and coordinate the particulars. A knowledgeable, courteous staff, whose goal is to provide a superior level of customer service, works with and supports the Event Planner.

For business or pleasure, the Conference Center at Stoweflake offers the best of all worlds. From luxurious suites with fireplaces and elegant New England-style rooms, to the privacy of the deluxe Townhouses, accommodations are spacious with uncompromising attention to detail. Generous work areas, multiple telephone lines, voice mail, high speed Internet access, data ports, wireless internet common areas, complimentary coffee and attentive 24 hour room service are only a few of the many conveniences available to our guests. Every room enjoys a view of the mountains or gardens.



	Dimensions	Sq. Feet	Ceiling Height	Theater	Classroom	U-Shape	Hollow Square	Banquet
Luxury Suite	60 X 43	2580	12'	250	150	65	80	220
Townhouse	36 X 27	972	12' 6"	60	40	25	35	70

DINING FROM CASUAL TO AWARD-WINNING



Dining at the Stoweflake is more than a memorable meal, it is an incredible culinary journey. If you are interested in hosting a private function, any of Stoweflake's dinning locations may be available. At casual and festive Charlie B's Pub & Restaurant, 10 ales and 60 wines are served by the glass, and its tempting menu of American Cuisine specialties has made Charlie B's a popular Stowe eatery and gathering place. At Winfield's Bistro, a perennial winner of the Wine Spectator Award and the AAA - Four Diamond restaurant award, all of the inspired dishes and creative combinations feature fresh, seasonal ingredients and the ambiance is both welcoming and gracious. The spa

cuisine at the Poolside Café is as delicious as it is healthy and the cozy café provides a quiet place to relax.



The Spa at Stoweflake provides a soothing, tranquil environment in which business executives and meeting attendees can relax, reflect and reenergize. It offers an opportunity to evaluate professional development and explore personal potential. At the Spa at Stoweflake, luxury is a whole-being experience where every need is anticipated, then graciously fulfilled. Named as one of America's Top 10 Spas by Spa and Spa Finder magazines, the spa provides an ideal atmosphere for corporate retreats that are both nurturing and nourishing. From invigorating massages and gentle wraps, to exclusive signature treatments, a visit to the Spa at Stoweflake is an experience you will never want to end, and certainly never forget.



The Sport & Wellness Center offers top-of-the-line fitness facilities and equipment, indoor and outdoor heated pools, outdoor Jacuzzi, steam room, sauna, and racquetball/squash court. Golfers enjoy our private, nine-hole, par three golf course, practice range and greens; in addition Stoweflake is course-side to the 18-hole championship course at Stowe Country Club. Tennis players can book private or group lessons and play on our outdoor Har-Tru Clay courts.

Stowe is one of America's premier outdoor destinations where each sensational season offers incredible choices for nature lovers and sports enthusiasts. From glorious golf and wilderness hiking in summer, to spectacular snowshoe treks and fantastic downhill skiing in winter, the Conference Center at Stoweflake offers endless opportunities for those in search of fun, adventure and an unforgettable meeting experience. Our professional staff can augment your meeting objectives by offering a wide range of training programs for individuals and group activities including team building, goal-setting, problem solving and stress/conflict management, among other wellness, self-improvement and fitness programs.

